

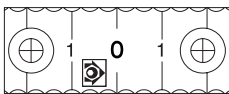
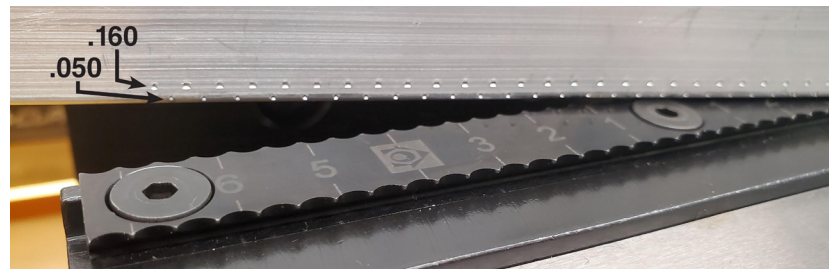
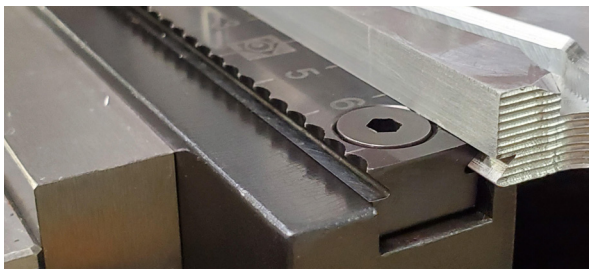
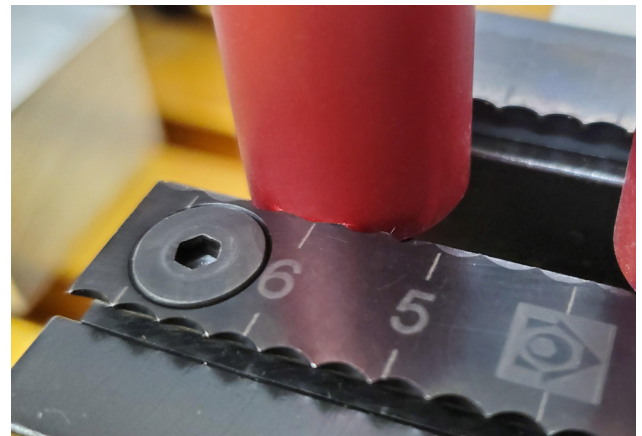
**NEW SIZES
NOW
AVAILABLE!**

TALONGRIP™ LONG LENGTH SERRATED GRIPS

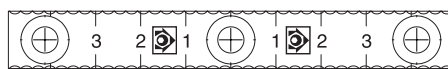


You asked for them, you got 'em!

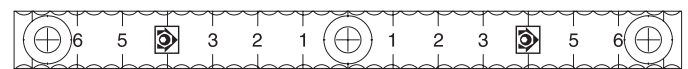
The TalonGrip™ Long Length Serrated Grips are now available. These new grips are designed as a “drop fit” into our original TalonGrip™ jaw sets or for use on a fixture, with a gripping height range of .050 – .160". For applications where specific grip location is not necessary or higher and full length penetration is desired. Made from S7, heat-treated and finished with a black oxide coating. We also laser engraved each grip with a 10mm scale for reference on repeatable part placement.



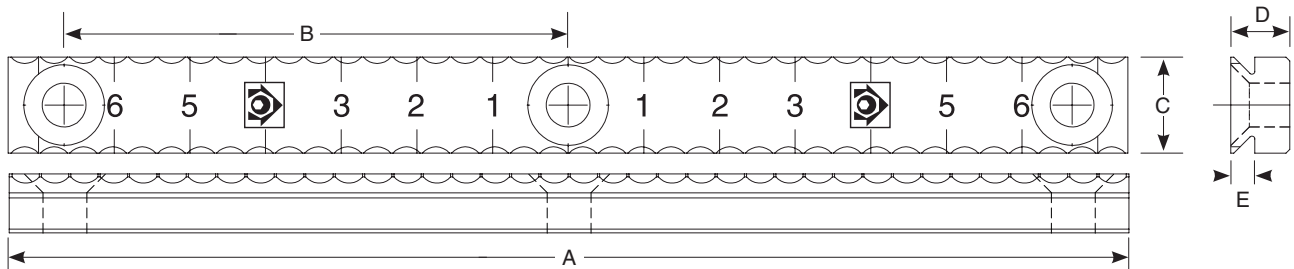
33052



33054



33056



Part No.	Description	A (metric)	B (metric)	C (metric)	D (metric)	Gripping Height/E (metric)	Fits Jaw Set	Per Pack
33052	Talongrip™ Long Length Serrated Grip	1.969" (50.01mm)	1.500" (38.10mm)	.750" (19.05mm)	.367" (9.32mm)	.050" - .160" (1.27 - 4.06mm)	32088/32266	2/pk
33054	Talongrip™ Long Length Serrated Grip	3.888" (98.75mm)	1.624" (41.25mm)	.500" (12.70mm)	.307" (7.79mm)	.050" - .125" (1.27 - 3.17mm)	32044/32068	2/pk
33056	Talongrip™ Long Length Serrated Grip	5.832" (148.13mm)	2.625" (66.68mm)	.500" (12.70mm)	.307" (7.79mm)	.050" - .125" (1.27 - 3.17mm)	32066	2/pk

NOTE: 10-32x1/2 and M5x12 screws provided. Due to the similar thread pitch on both of these screws, either may be used in M5 threaded holes as long as they do not exceed 1" (25mm) in length. The 10-32 seats better in the gripper rail and is less likely to bind during removal.