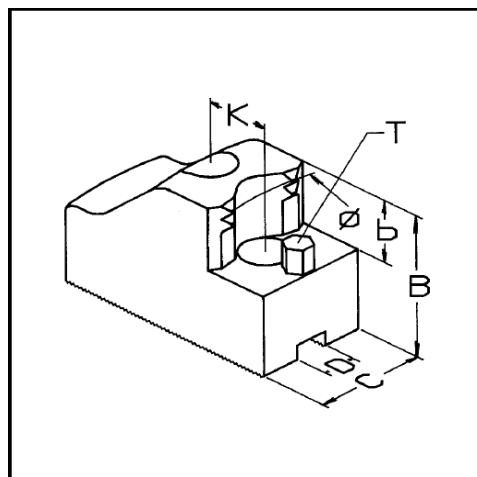
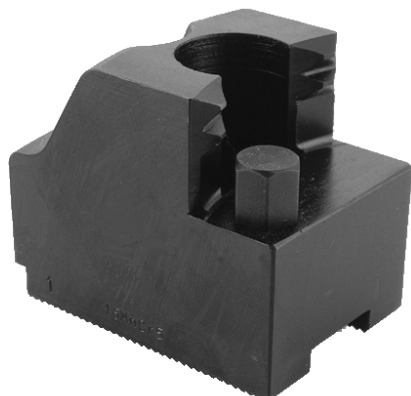


TuffGrip Hard Jaws



TuffGrip Hard Jaws are highly suited for aggressive gripping of 1st OP work and generally on black bar, castings or forgings. They provide secure grip and torque transmission

- Available as both External Grip and Internal Grip Jaw
- Metric and Imperial Serrations
- Lightweight for higher surface speeds
- Available for all brands of chuck from 6" to 24" Chucks
- Secure grip face with aggressive serration on the surface
- Workpiece Stand-Off Pins from 5mm to 25mm height

External Standard Hard Serrated Gripper Jaws

Chuck Model	Grip Range (mm)		Part No.	B	C	D	K	b	T
	min	max							
B-206 A1220	26	47	TG-A1220-EX-A3	49	40	12	20	20	M6
	37	67	TG-A1220-EX-A4						
	50	81	TG-A1220-EX-A6						
	64	96	TG-A1220-EX-A7						
	80	112	TG-A1220-EX-A9						
B-208 A1425	31	68	TG-A1425-EX-B3	49	40	14	25	20	M6
	60	96	TG-A1425-EX-B6						
	87	125	TG-A1425-EX-B9						
	114	152	TG-A1425-EX-B12						
B-210 A1630	44	85	TG-A1630-EX-C4	59	40	16	30	25	M8
	82	125	TG-A1630-EX-C8						
	125	169	TG-A1630-EX-C13						
	168	212	TG-A1630-EX-C17						
B-212 A2130	48	112	TG-A2130-EX-E5	59	50	21	30	25	M8
	102	168	TG-A2130-EX-E10						
	165	233	TG-A2130-EX-E16						
	232	300	TG-A2130-EX-E23						

*approx grip ranges

Above jaws are 1.5mm x 60° Serrations; other variations available