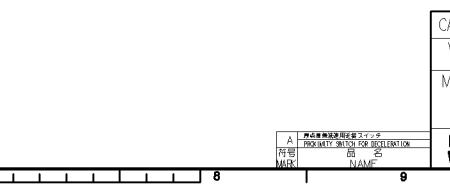
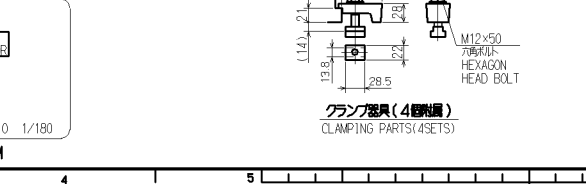
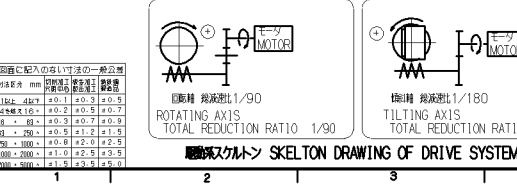
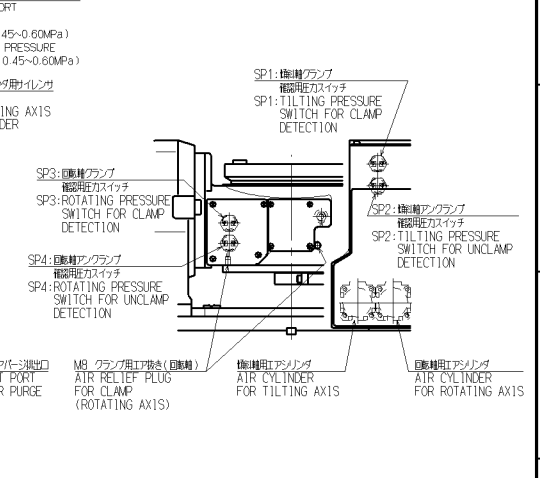
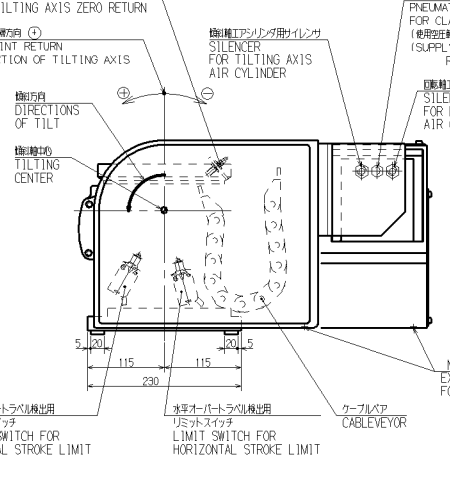
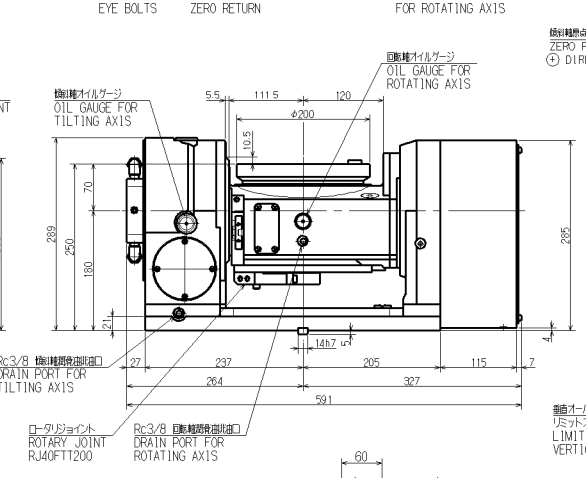
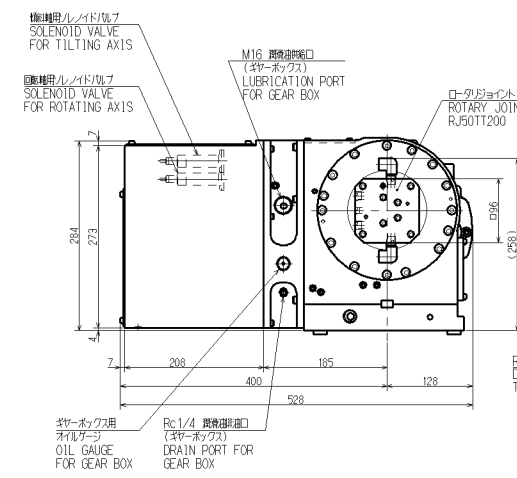
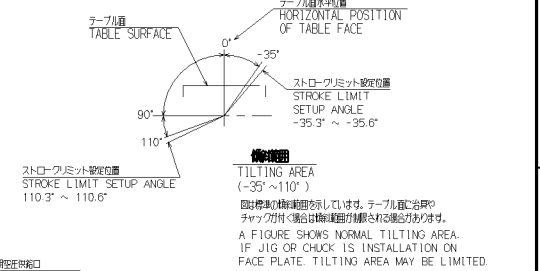
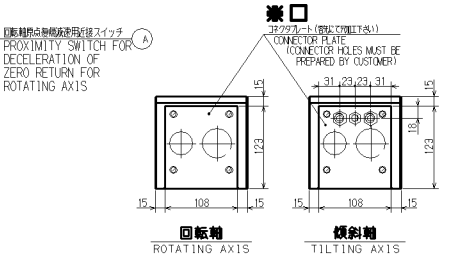
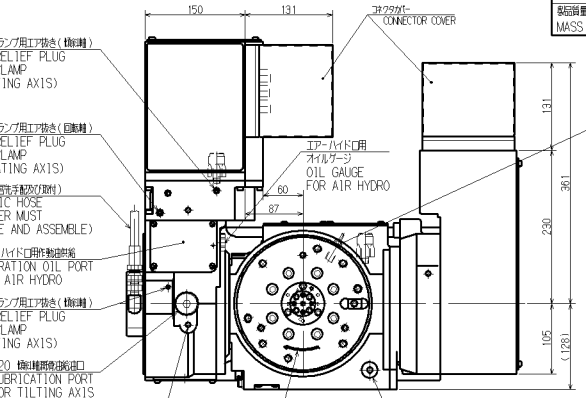
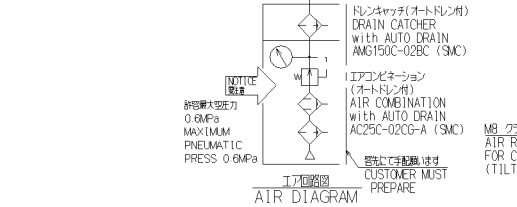


仕様 SPECIFICATIONS		
回転軸 ROTATING AXIS	傾斜軸 TILTING AXIS	
指針精度 INDEXING ACCURACY	20 sec以内	指針精度 INDEXING ACCURACY 60 sec以内
再現精度 REPEATABILITY	4 sec以内	再現精度 REPEATABILITY 4 sec以内
テーブル最大回転速度 MAXIMUM ROTATION SPEED (モータ MOTOR)	33.3 min ⁻¹ (13000 min ⁻¹)	テーブル最大回転速度 MAXIMUM ROTATION SPEED (モータ MOTOR) 16.6 min ⁻¹ (13000 min ⁻¹)
クランプトルク CLAMPING TORQUE (空気圧力 PNEUMATIC PRESS)	600 N m (0.5 MPa)	クランプトルク CLAMPING TORQUE (空気圧力 PNEUMATIC PRESS) 1200 N m (0.5 MPa)
空気圧力 MAXIMUM PNEUMATIC PRESS	0.6 MPa	空気圧力 MAXIMUM PNEUMATIC PRESS 0.6 MPa
総減速比 TOTAL REDUCTION RATIO	1/90	総減速比 TOTAL REDUCTION RATIO 1/180
機械モーメントイナーシャ MACHINE INERTIA (REDUCED TO MOTOR SHAFT)	0.000242kgm ²	機械モーメントイナーシャ MACHINE INERTIA (REDUCED TO MOTOR SHAFT) 0.000195kgm ²
質量 MASS OF ROTARY TABLE	173 kg	

- 注記 NOTE**
- ACサーボモータ: 最初に手配の仕様を確認。W/O MOTOR (SETTING WORKS OF MOTOR AT CUSTOMER.) 設置時の向きを注意。MOUNTING POSSIBLE MOTOR FOR TILTING AXIS: FANUC αIF 2/5000 (αIA1000) (A06B-0205-B000) 設置時の向きを注意。MOUNTING POSSIBLE MOTOR FOR ROTATING AXIS: FANUC αIF 2/5000 (αIA1000) (A06B-0205-B000)
 - 図中の記載の精度等については、カタログ記載の値とします。ACCURACY STANDARDS EXCEPT STATED IN THIS DRAWING SHOULD BE APPEALED TO THAT IN CATALOGUE.
 - 設置の際にカバーを再取り付けする時は、必ずシリコン塗油剤を塗布することを確認してください。AFTER COVERS ARE REMOVED, TO ASSURE WATER/TIGHTNESS, A LIQUID SILICON GASKET MUST BE APPLIED BEFORE REPLACING COVERS.
 - 本機はエアポート仕様での使用を前提とした設計となっており、エアポートの仕様を必ずご確認ください。THIS ROTARY TABLE IS DESIGNED UNDER THE CONDITION OF AIR PURGE. ACCORDINGLY CLEAN AIR FROM PNEUMATIC PORT HAVE TO BE SUPPLIED. THERE IS NO TEST EQUIPMENT TO ROTATE THE SERVO MOTOR THAT DECIDED BY THE CUSTOMER SO THE ROTATION OF THIS ROTARY TABLE IS CHECKED BY KITAGAWA TEST EQUIPMENT.
 - ワークの重量や形状がカタログを参照してください。図面を越える場合はお問い合わせください。PLEASE REFER TO THE CATALOGUE FOR ALLOWABLE LOADING AREA. IF THE WORK PIECE SIZE IS LARGER THAN THE ALLOWABLE LOADING AREA, PLEASE CONTACT US.
 - 本機を機械に設置する場合には、周辺に干渉物を防止するため、外形寸法より10mm以上の余裕を確保してください。WHEN YOU INSTALL A ROTARY TABLE ON A MACHINE, PLEASE KEEP A CLEARANCE OF MORE THAN 10 mm BETWEEN THE ROTARY TABLE AND THE MACHINE SPLASHGUARD IN ORDER TO PREVENT THE INTERFERENCE.



CAREER	61E252259, 61E114639	SCALE	TYPE	TT200BER01	WEIGHT	kg
W. D.	61E253270	1:4		NCテーブル NC ROTARY TABLE		
MANAGER	CHIEF	DRAWN BY	NAME	TT200BER01 ガイワイ		
		DATE	DATE	OUTSIDE VIEW		
		16.03.04	16.03.04			
KITAGAWA IRON WORKS CO.,LTD			DATE	16.03.04	DRW NO.	61E114724 0