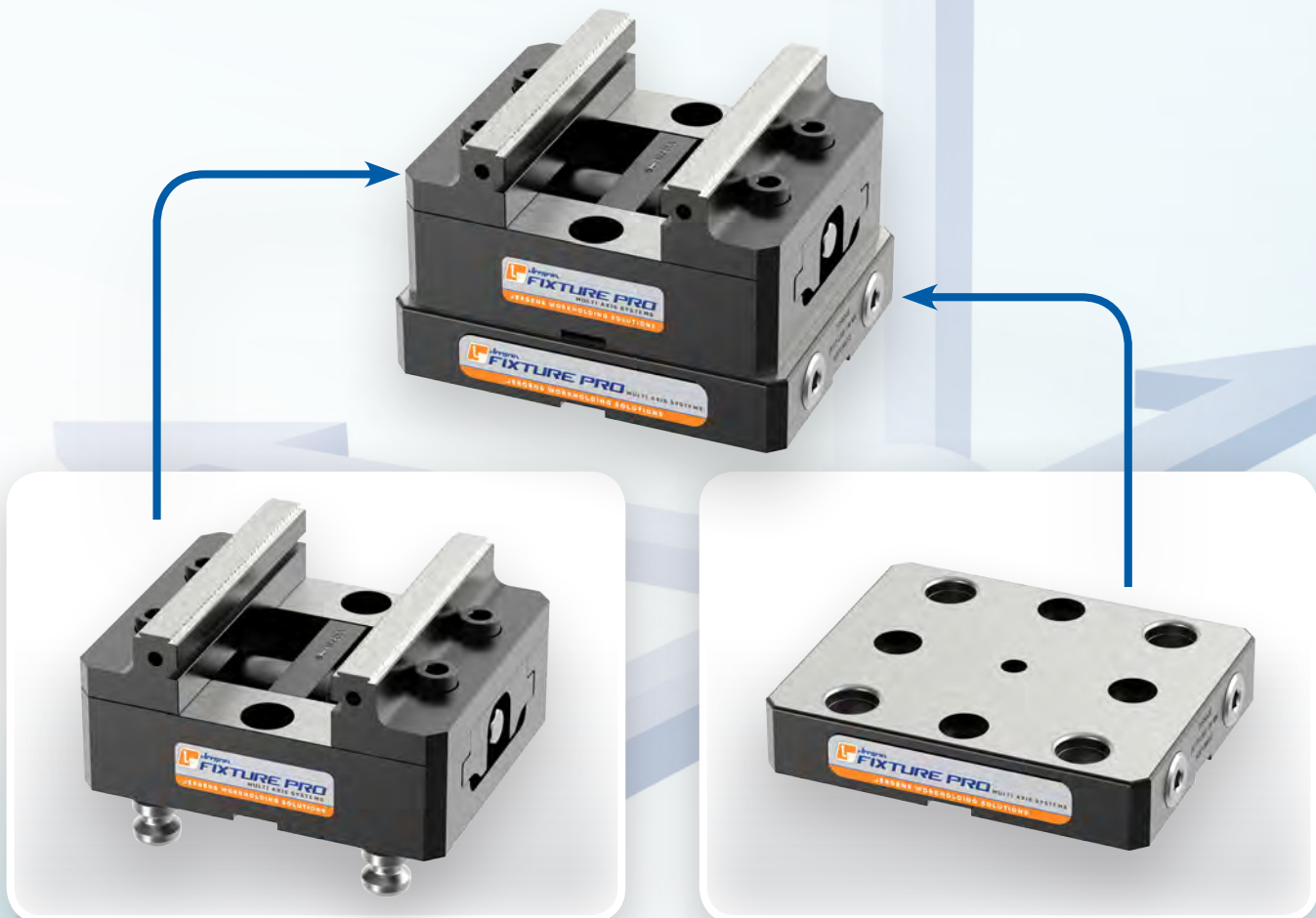




JERGENS WORKHOLDING SOLUTIONS

OPEN UP YOUR FIVE AXIS MACHINING POSSIBILITIES



JERGENS QUICK-CHANGE VISE AND PALLET COMBINATION

Our 125 mm vise and 96 mm pallet is an industry-standard, versatile quick-change combination. Working ideally together on vertical, horizontal and multi-axis machining centers, the vise/pallet pair significantly opens up possibilities for increased machining access and quick change over.





NEW Universal 125mm Vise and 96mm Pallet

The Universal Vise & Pallet provides a Universal Quick Change Solution - compatible with industry standard patterns. The pallet & Vise mounts to all 3, 4, and 5 Axis VMC's and HMC's, rotary tables and tombstones



125mm Self Centering, Multi Axis, 5 Axis Vise

- » The compact design is engineered as a perfect fit to the Fixture Pro® System.
- » Compatible with the Lang Quick Point® system and Jergens Fixture-Pro® Drop & Lock™ Pallets
- » Steel hardened jaws included

Part Number	Size	Weight	Clamping Force	L	W	H	Include Studs	Hex Wrench
5CV12501	125 mm	12 lbs.	3600 # at 45 FP of Torque	150	125	73.7	No	13mm Included

Replacement Jaws

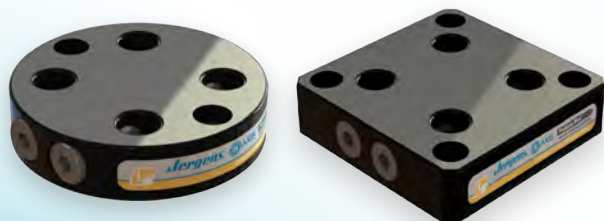
Part Number (Set of 2 Jaws)	Material	L (mm)	W (mm)	H (mm)
5CV12501-ASJ	Blue Aluminum Jaw	125	57	32
5CV12501-SSJ	Soft Steel Jaw	125	57	32
5CV12501-HSJ	Steel Hardened Jaw	125	57	32



NEW 96 mm Drop & Lock™ Pallet

- » Quickly & accurately locates vises & fixturing
- » Compatible with Lang MacroGrip® Workholding and 5th Axis® Vises

Part Number	Style	Mounting	Configuration of Pins	L	W	H	Mounting Pattern	Locating	Mounting Type	Weight lbs (Kgs)	Pull Stud	
											Size (mm)	Part No.
5QP130013	Rectangle	Metric	4	130	160	30	96 x 96	Ctr Timing Pin, QLS	QLS, 12mmSHCS	9.3 / 4.3	20	5QP021
5QP130513	Rectangle	Inch	4	5.118	6.30	1.118	96 x 96	Ctr Timing Pin, QLS	QLS, 1/2" SHCS	9.3 / 4.3	20	5QP021



Fixture-Pro® Drop & Lock™ Pallet Changers & Pull Studs

Drop a fixture or Vise into the Pallet Changer using the Fixture-Pro® pull stud system. With two quick turns of a hex wrench it's ready to machine.

Part Number	Style	Mounting	Configuration of Pins	L	W	H	Mounting Pattern	Locating	Mounting Type	Weight lbs (Kgs)	Pull Stud	
											Size (mm)	Part No.
5QP130001	Square	Metric	4	130	130	30	60 x 60	Ctr Timing Pin, QLS	QLS, 12mm SHCS	7.2 / 3.3	20	5QP023
5QP130002	Round	Metric	4	130	-	30	60 x 60	Ctr Timing Pin, QLS	QLS, 12mmSHCS	5.8 / 2.6	20	5QP023
5QP130501	Square	Inch	4	5.118	5.118	1.181	60 x 60	Ctr Timing Pin, QLS	QLS, 1/2" SHCS	7.2 / 3.3	20	5QP023
5QP130502	Round	Inch	4	5.118	-	1.181	60 x 60	Ctr Timing Pin, QLS	QLS, 1/2" SHCS	5.8 / 2.6	20	5QP023

Pull Studs for New Vise/Pallet



Part Number	Size (Diameter)	Thread size
5QP021	20MM	M10
5QP023	20MM	M12

Note: 25 ft. lbs. max torque

