

MonoQuad Systems

- Standard version with 8 clamping positions.
- Fastest quick change jaw system
- Fully machinable soft jaws
- Full jaw travel
- Hardened and ground steel work surface
- Chip flow through design
- Mounts directly to locator plate or pallet

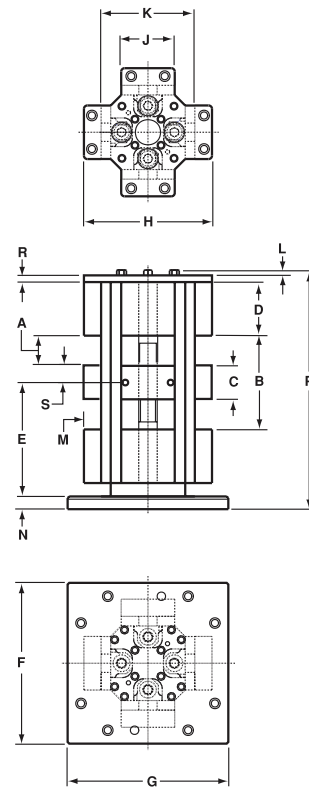
MonoQuad is available in 4"/100mm and 6"/150mm.

Low Profile systems are also available.

Contact us for additional information.

Dimensions and Capacities		
Dimensions	MQS4.8/100.8 in / mm	MQS6.8/150.8 in / mm
A Jaw Capacity*	2.25 / 57	3.50 / 89
B Single Station Capacity*	7.00 / 178	10.00 / 254
C Fixed Jaw Width	2.50 / 64	3.00 / 76
D Jaw Length	4.00 / 102	5.00 / 127
E Base to Center of Fixed Jaw	8.50 / 216	11.00 / 279
F Base Length	12.00 / 305	12.00 / 305
G Base Width	12.00 / 305	12.00 / 305
H Overall Width	9.58 / 243	11.50 / 292
J Jaw Width	4.00 / 102	6.00 / 152
K Width Rail to Rail	7.00 / 178	8.50 / 216
L Lead Screw Hex	0.80 max / 20 max	0.80 max / 20 max
M Jaw Height	1.25 / 32	1.50 / 38
N Base Flange Thickness	0.95 / 24	0.95 / 24
P Overall Height	18.25 / 464	23.25 / 591
R Top Plate Thickness	0.50 / 13	0.50 / 13
S Center of Fixed Jaw to Face	1.25 / 32	1.50 / 38
Weight	100 lbs / 45 kg	200 lbs / 91 kg

*unmachined jaw capacity



Included adapter plate fits
Bock grid pattern, 80mm
& 100mm machine pallets.