



CapJet™

RATED TO 150 PSI (10 BAR)

FITS NPT & BSPT PIPE NIPPLES



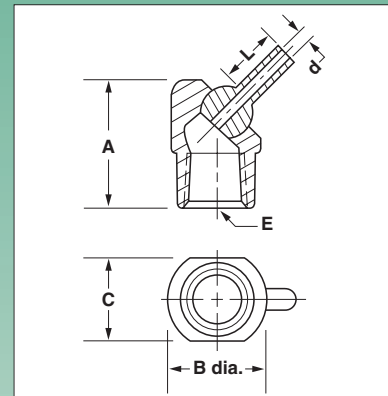
New metric tapped balls allow use with Extension Tubes and Spray Tips.

UNIVERSAL CAP-TYPE COOLANT NOZZLE

- Screws onto any NPT or BSPT pipe nipple just like a pipe cap
- Same great features as the TurretJet, except with female pipe thread
- Ideal for high production, dedicated machine tools with rigid coolant piping
- Choose orifice size and nozzle extension to suit your application
- Choose short extensions for tight spaces and where stringy swarf is a problem
 - Long extensions make aiming a breeze and shoot farther
- Choose larger orifices for maximum flow ■ Choose smaller orifices when using multiple nozzles
- Choose tapped ball if you need to quickly plug the orifice (setscrew included)
- Metric tapped balls allow use with **Extension Tubes** and **Spray Tips**.

DIMENSIONS IN INCHES

Part No.	Thread Size "E"	Orifice Dia. "d"	Extension "L"	A	B	C	Pkg Qty
CJ07510	1/8 NPT/BSPT	.11	0	.82	.63	.50	5
CJ07512	1/8 NPT/BSPT	.11	.25	.82	.63	.50	5
CJ07513	1/8 NPT/BSPT	.11	.50	.82	.63	.50	5
CJ07514	1/8 NPT/BSPT	.11	1.25	.82	.63	.50	5
CJ07516	1/8 NPT/BSPT	.16	0	.82	.63	.50	5
CJ07518	1/8 NPT/BSPT	.16	.50	.82	.63	.50	5
CJ07520	1/8 NPT/BSPT	.16	1.25	.82	.63	.50	5
CJ07522	1/8 NPT/BSPT	#10-32 UNF	0	.82	.63	.50	5
CJ07523	1/8 NPT/BSPT	M5 x .8	0	.82	.63	.50	5
CJ07524	1/4 NPT/BSPT	.11	0	.94	.75	.63	5
CJ07526	1/4 NPT/BSPT	.11	.25	.94	.75	.63	5
CJ07527	1/4 NPT/BSPT	.11	.50	.94	.75	.63	5
CJ07528	1/4 NPT/BSPT	.11	1.25	.94	.75	.63	5
CJ07530	1/4 NPT/BSPT	.16	0	.94	.75	.63	5
CJ07532	1/4 NPT/BSPT	.16	.50	.94	.75	.63	5
CJ07534	1/4 NPT/BSPT	.16	1.25	.94	.75	.63	5
CJ07536	1/4 NPT/BSPT	#10-32 UNF	0	.94	.75	.63	5
CJ07537	1/4 NPT/BSPT	M5 x .8	0	.82	.63	.50	5
CJ07560	3/8 NPT/BSPT	.11	0	1.13	.88	.75	5
CJ07538	3/8 NPT/BSPT	.16	0	1.13	.88	.75	5
CJ07540	3/8 NPT/BSPT	.16	.50	1.13	.88	.75	5
CJ07542	3/8 NPT/BSPT	.16	1.25	1.13	.88	.75	5
CJ07544	3/8 NPT/BSPT	.22	0	1.13	.88	.75	5
CJ07546	3/8 NPT/BSPT	.22	.50	1.13	.88	.75	5
CJ07548	3/8 NPT/BSPT	.22	1.25	1.13	.88	.75	5
CJ07550	3/8 NPT/BSPT	1/4-28 UNF	0	1.13	.88	.75	5
CJ07552	3/8 NPT/BSPT	M6 x 1.0	0	1.13	.88	.75	5



CapJet shown installed on end of threaded pipe.

Material: Body: Acetal
 Ball & Extension: Stainless Steel
Maximum Pressure: 150 PSI (10 bar)
Maximum Operating Temperature: 160°F